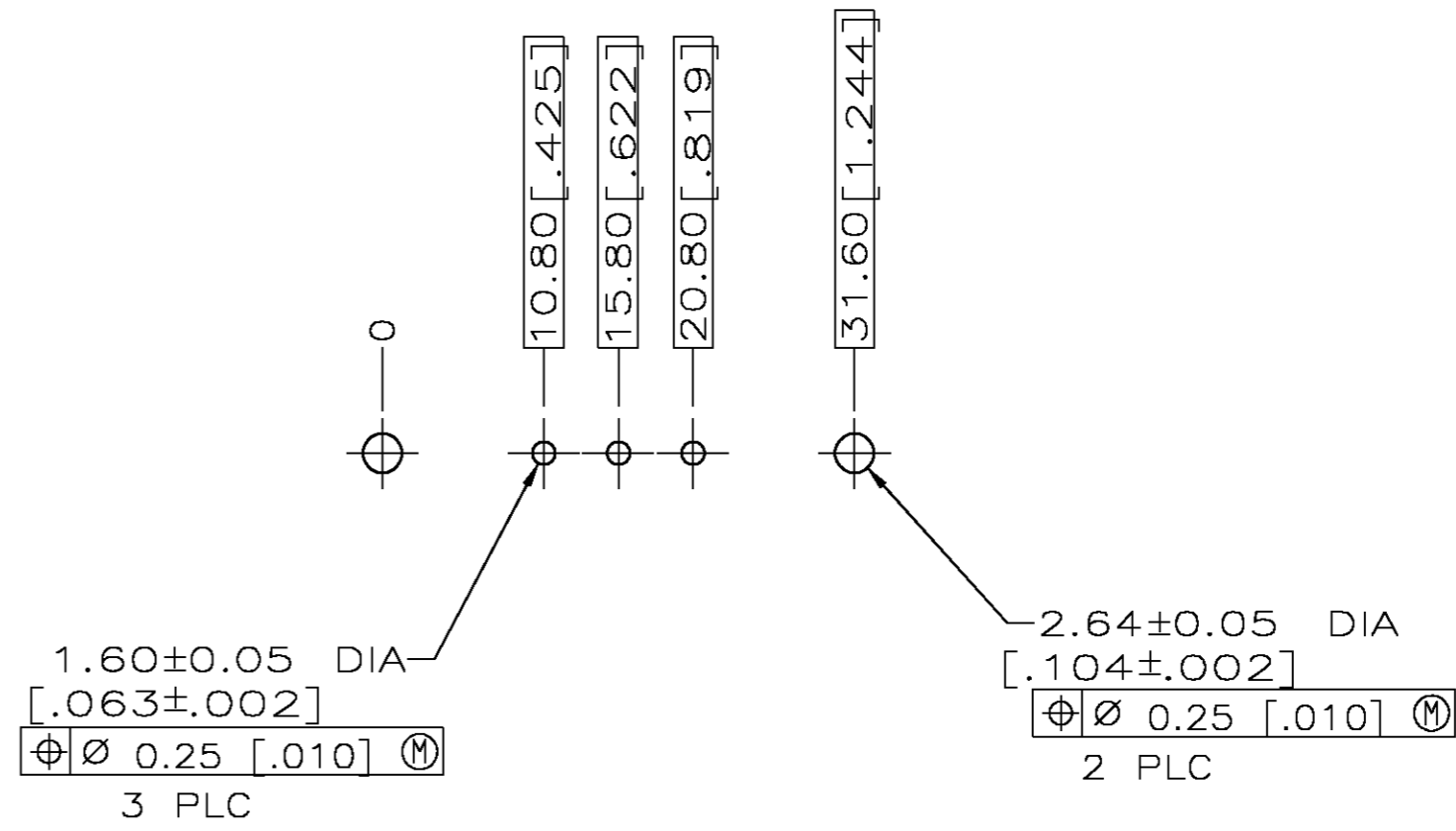
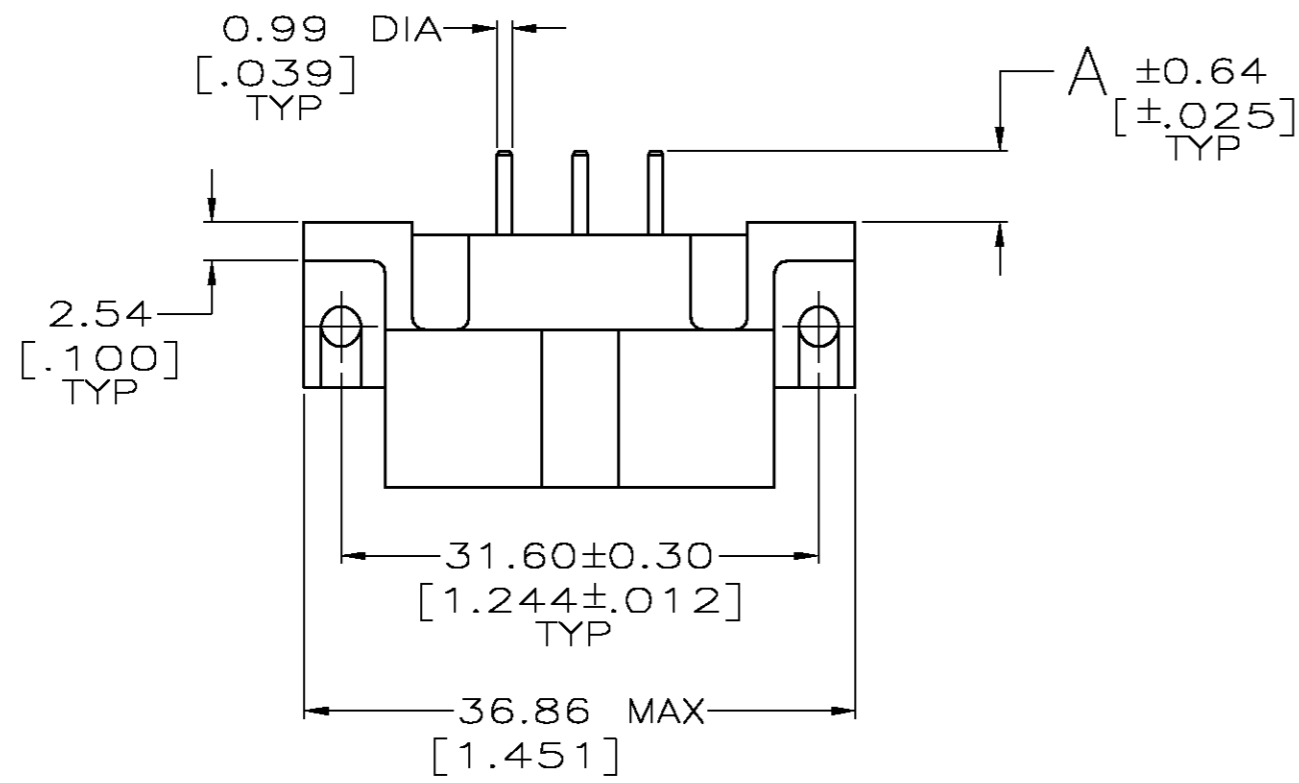
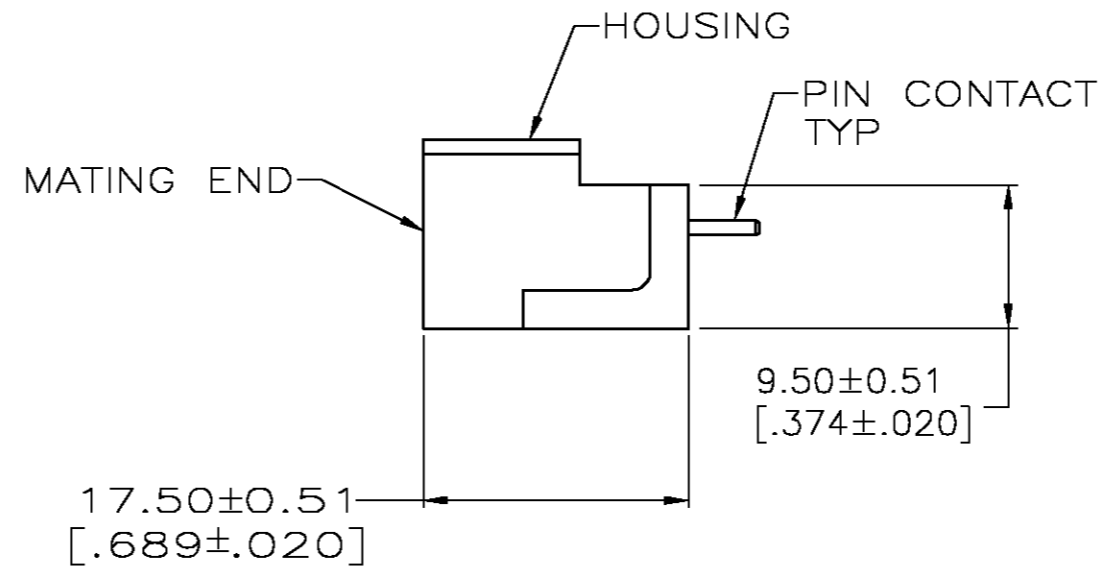
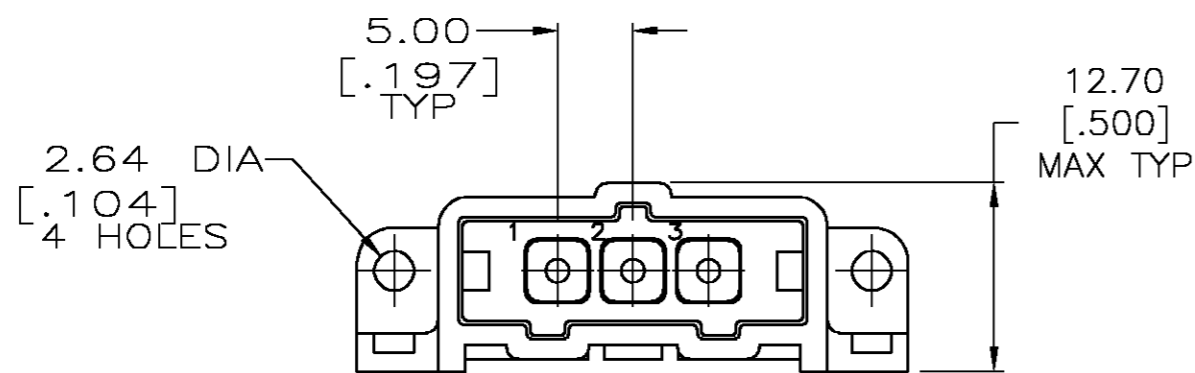


THIS DRAWING IS UNPUBLISHED. RELEASED FOR PUBLICATION
 © COPYRIGHT BY TYCO ELECTRONICS CORPORATION. ALL RIGHTS RESERVED.

LOC		DIST		REVISIONS			
P	LTR	DESCRIPTION	DATE	DWN	APVD		
L		REVISED PER 0G3B-0167-05	3/9/05	SS	GS		



RECOMMENDED PC BOARD LAYOUT



- ① NYLON, RED.
- ② BRASS PER ASTM B36.
- ③ 3.81um [.000150] MIN TIN-LEAD OVER 2.54um [.000100] MIN COPPER OR 1.27um [.000050] MIN NICKEL.
- ④ 0.76um [.000030] MIN GOLD FOR A LENGTH OF 5.08 [.200] MIN FROM MATING END 3.81um [.000150] MIN TIN-LEAD FOR A LENGTH OF 5.36 [.211] MIN FROM OPPOSITE END, BOTH OVER 1.27um [.000050] MIN NICKEL.
- ⑤ .000150 MIN TIN OVER .000100 MIN CU, OR .000050 MIN NICKEL.
- ⑥ 0.76um [.000030] MIN GOLD FOR A LENGTH OF 5.08 [.200] MIN FROM MATING END 3.81um [.000150] MIN TIN FOR A LENGTH OF 5.36 [.211] MIN FROM OPPOSITE END, BOTH OVER 1.27um [.000050] MIN NICKEL.

7.52 [.296]	⑥	207365-9
4.72 [.186]	⑥	207365-8
4.72 [.186]	⑤	207365-7
7.52 [.296]	④	207365-6
4.72 [.186]	④	207365-3
4.72 [.186]	③	207365-1
A	FINISH	PART NUMBER

THIS DRAWING IS A CONTROLLED DOCUMENT.		DWN	07/20/92	Tyco Electronics Corporation	
DIMENSIONS: mm [INCHES]		L.SIPE	7-24-92	Harrisburg, Pa 17105-3608	
TOLERANCES UNLESS OTHERWISE SPECIFIED:		CHK	R.STONE	NAME	
0 PLC ± -		APVD	A.TRAVIS	PIN HEADER ASSEMBLY, 3 POSN, IN-LINE, SMALL METRIC CONNECTOR, METRIMATE	
1 PLC ± -		PRODUCT SPEC	-	SIZE	CAGE CODE
2 PLC ± 0.25 [.010]		APPLICATION SPEC	-	A2	00779
3 PLC ± -		WEIGHT	-	DRAWING NO	
4 PLC ± -		CUSTOMER DRAWING	-	C=207365	
ANGLES ± -		SCALE	2:1	SHEET	1 OF 1
FINISH		RESTRICTED TO	-	REV	L
HOUSING: ①					
CONTACTS: ②					